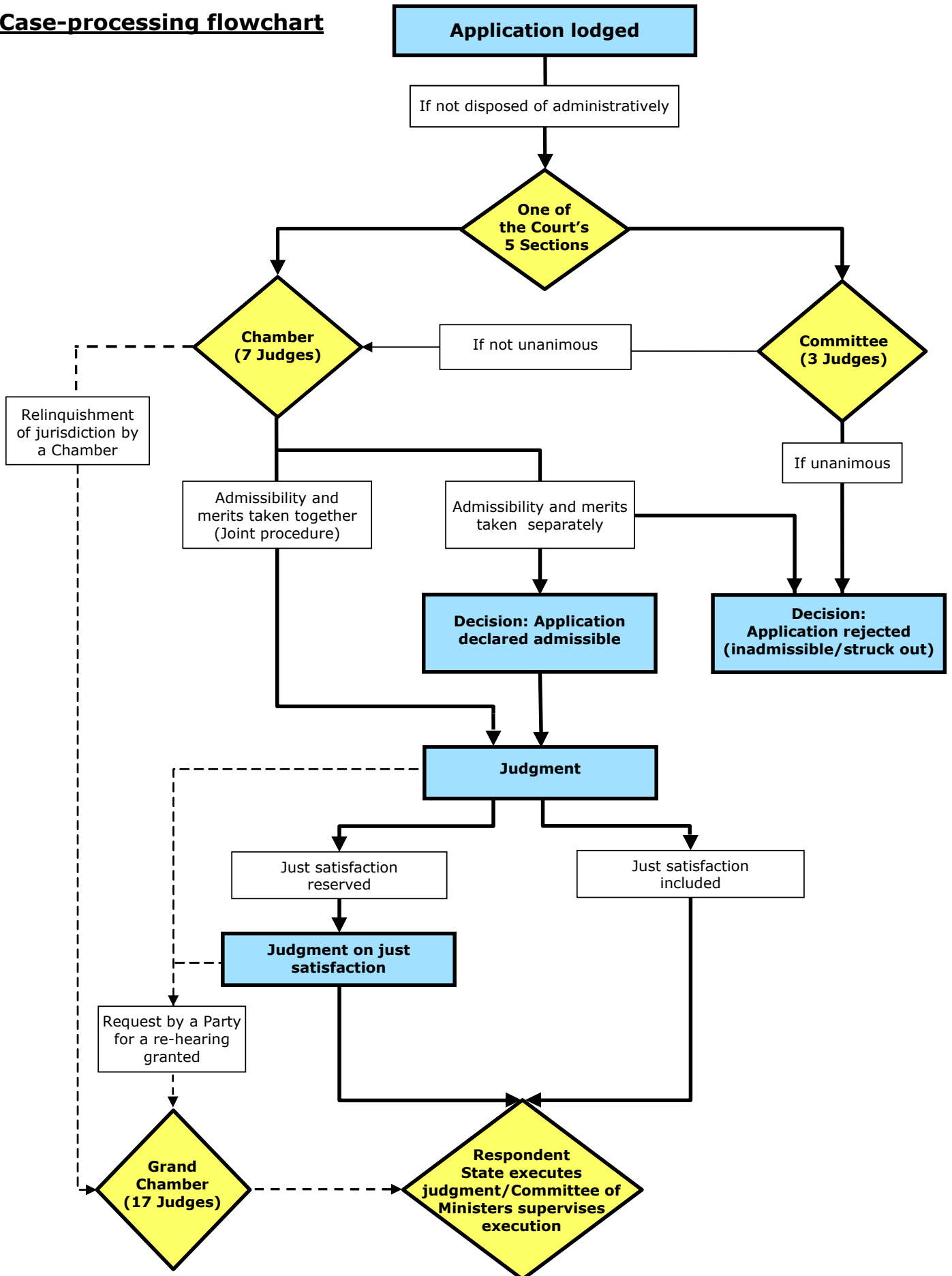


# EUROPEAN COURT OF HUMAN RIGHTS COUR EUROPÉENNE DES DROITS DE L'HOMME

## Case-processing flowchart



This flowchart indicates the progress of a case through the different judicial formations. In the interests of readability, it does not include certain stages in the procedure – such as communication of an application to the respondent State, consideration of a re-hearing request by the Panel of the Grand Chamber and friendly settlement negotiations.